



South Cambs District Council

Babraham APM: May 2026

Councillor Peter McDonald

District Councillor for Duxford, Ickleton, Hinxton, Babraham, Pampisford

Key Activities & Changes 2026/2027

Key Activities 2026/27

- £225k for CoL support including warm hubs, slow cookers and The Mobile Food Hubs
- Having doubled the number of new Council homes built from 35 in 2019/20 to 75 in 2025/26 and 139 so far in 26/2027
- £50k per year for homelessness
- £8m to enhance energy efficiency in council 5,600 homes
- £2 million in next 2 years allocated to continue to upgrade existing housing stock, as part of continuing carbon reduction efforts.
- £300k pa for community groups
- New scheme LIFT to support lower income residents- £450k claimed so far
- Weekly Food Waste Collections

2 WHAT CAN I PUT IN MY CADDY?

You can recycle all your food waste, including the following:

 food waste	<ul style="list-style-type: none">✓ All uneaten food and plate scrapings	 dairy	<ul style="list-style-type: none">✓ Dairy products✓ Cheese✓ Eggs	 bread & pastries	<ul style="list-style-type: none">✓ Bread✓ Cakes✓ Pastries
 meat & bones	<ul style="list-style-type: none">✓ Raw meat✓ Cooked meat✓ Bones	 tea & coffee grounds	<ul style="list-style-type: none">✓ Tea bags✓ Coffee grounds	 fruit & vegetables	<ul style="list-style-type: none">✓ Raw vegetables✓ Cooked vegetables✓ Whole fruit✓ Peelings
 fish	<ul style="list-style-type: none">✓ Fish✓ Cooked fish✓ Bones	 rice, pasta & beans	<ul style="list-style-type: none">✓ Rice✓ Pasta✓ Beans	<p>Remember to recycle your mouldy and out of date food, including ready meals removed from their packaging</p>	

Please do not put any of these items in your caddy

- ✗ Packaging of any kind (except plastic liners)
- ✗ Liquids such as milk
- ✗ Oil or liquid fat
- ✗ Anything that is not food waste



Financials

2026/27

- SCDC takes c.£180 of the c. £1,700 of Band D Council Tax.
- Council Tax Increased this year by 2.99% or £5.24 to £180.64.
 - Correcting a deficit of £500k in 2019/20
 - SCDC still looking to generate 25% of income from investments (to protect Council & residents)
- County C Tax Increased by £84 or 4,99%.

5 yr Business Plan

- The budget for 2026/27 was agreed at a Full Council meeting on 24 February
- Support for the voluntary and community sector is boosted to £300k per year, £225k per year is allocated for cost-of-living support, and ongoing support for Mobile Warden Schemes was agreed.
- The Council Tax precept for the District Council will increase by 2.99% or £5.24 per year for a Band D property.
- This compares with a CPI inflation rate of 3.4%, wage growth of 4.2% (both from December 2025), and a state pension increase of 4.7% this year. The Council is expected to remain among the lowest-taxing 25% of district councils in the country.
- The budget accounts for the fact that the government has recently reduced the amount of Business Rates that local authorities can retain, further reducing our funding.

My Priorities

- 1. Monitor & influence planning projects.
 - Influence the local plan process/call for sites.
 - Monitor the 5 year housing land supply.
 - Work with villages on Wellcome Genome Campus development & housing covenants.
 - Monitoring Grange Farm possible development
 - IWM & Gonville & Caius plan for the Av Tech.
- 2. Keep residents up to date
 - Monthly report for every Parish.
 - Facebook & Twitter.
 - Focus leaflets – 12x since Election in 2020/22.
- 3. Carry out effective case work on:
 - Planning
 - Housing
 - Highways
- 4. Represent my villages for grant support- total grants in 2024/25 across the District
 - Rural England Prosperity Fund £350k
 - Community chest - £58k
 - Mobile wardens £100k
 - Zero carbon Grants £125k
 - Improving high streets £90k
- 6. Work effectively on Cabinet
 - Business Support responsibility

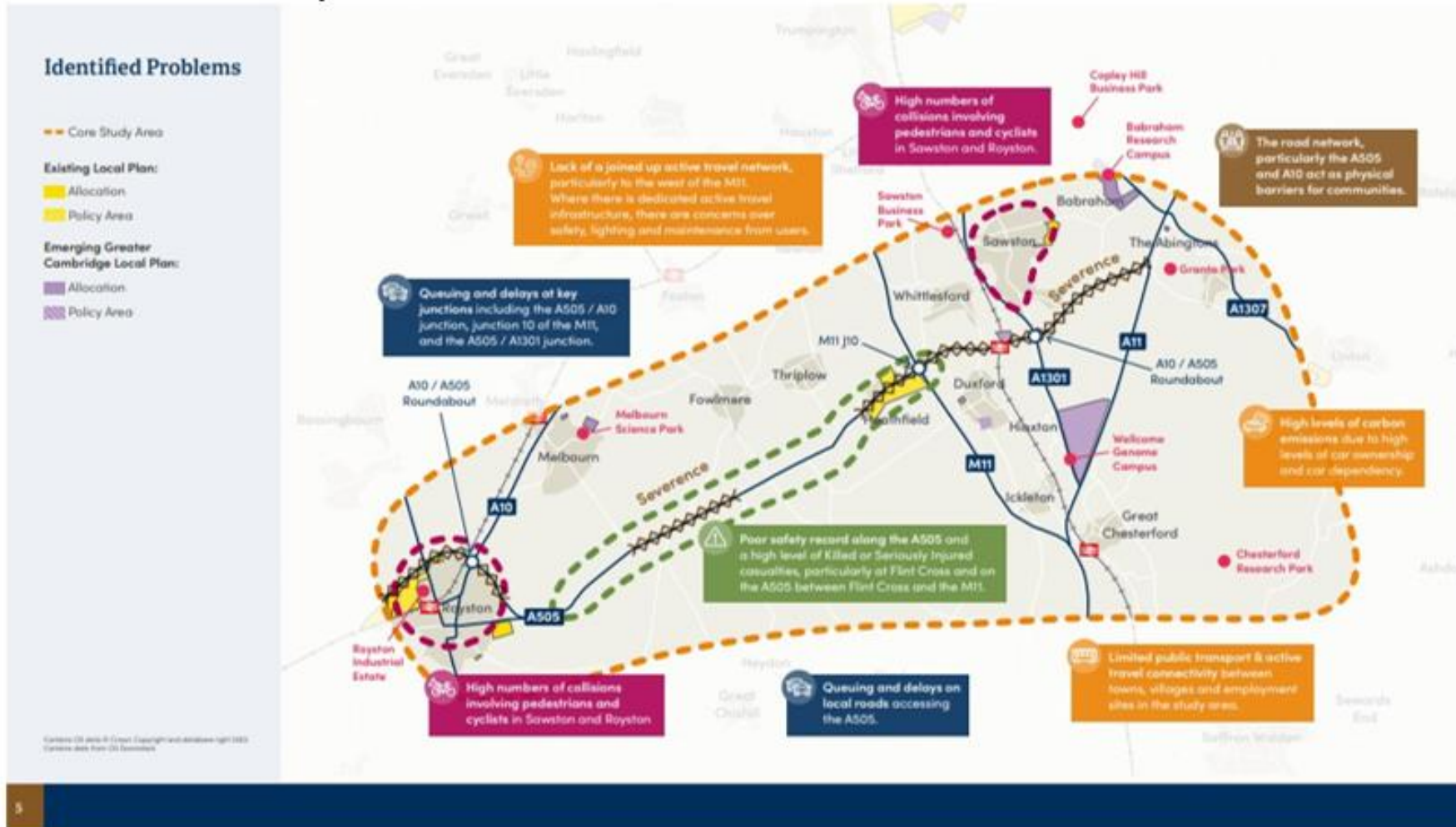


Council Tax Breakdown 2026/27

Authority	Amount
Cambridgeshire County Council	c.£1500
Cambridgeshire County Council Adults Social Care Precept	c.£285
South Cambridgeshire District Council	£180.64
Cambridgeshire Police	c.£313
Cambridgeshire Fire Authority	c.£91
Mayoral Combined Authority	c. £38

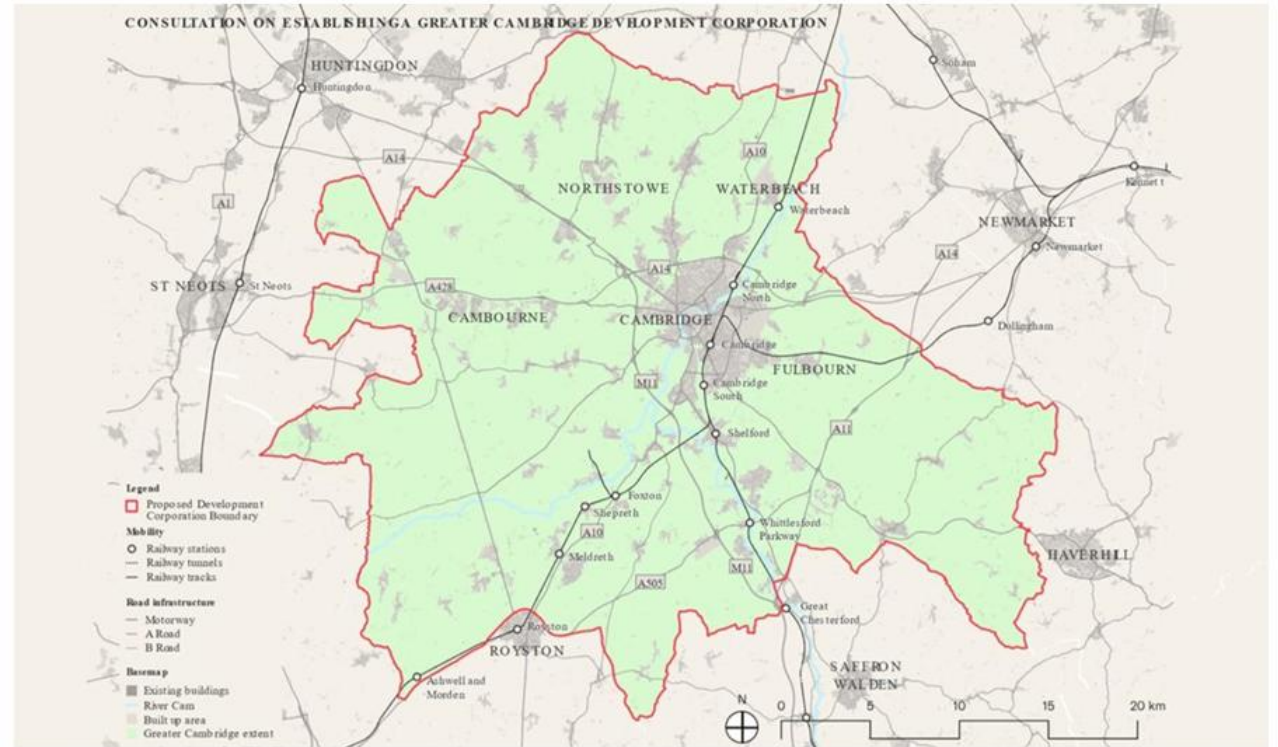


A 505 Study – Problems & Solutions



Cambridge Growth Company

- The Cambridge Growth Company (CGC) was established by the government in 2024 to foster additional economic growth in the Cambridge area by delivering housing, transport, water, and wider infrastructure.
- The council questioned the CGC Chair, Peter Freeman, at a Scrutiny & Overview Committee meeting on 29 January where the CGC gave firm reassurance that their aim was to support the delivery of the new Local Plan by helping to solve water and transport problems, rather than to rewrite it.
- The government is currently consulting on their plan to further the work of the CGC by forming a Development Corporation. The consultation closes on 1 April and I encourage Parish Councils and interested residents to respond. The council is holding an Extraordinary Meeting on 17 March to discuss its response.



The proposed boundary aligns with the current, combined administrative areas of Cambridge City Council and South Cambridgeshire District Council.



Cambridgeshire County Council

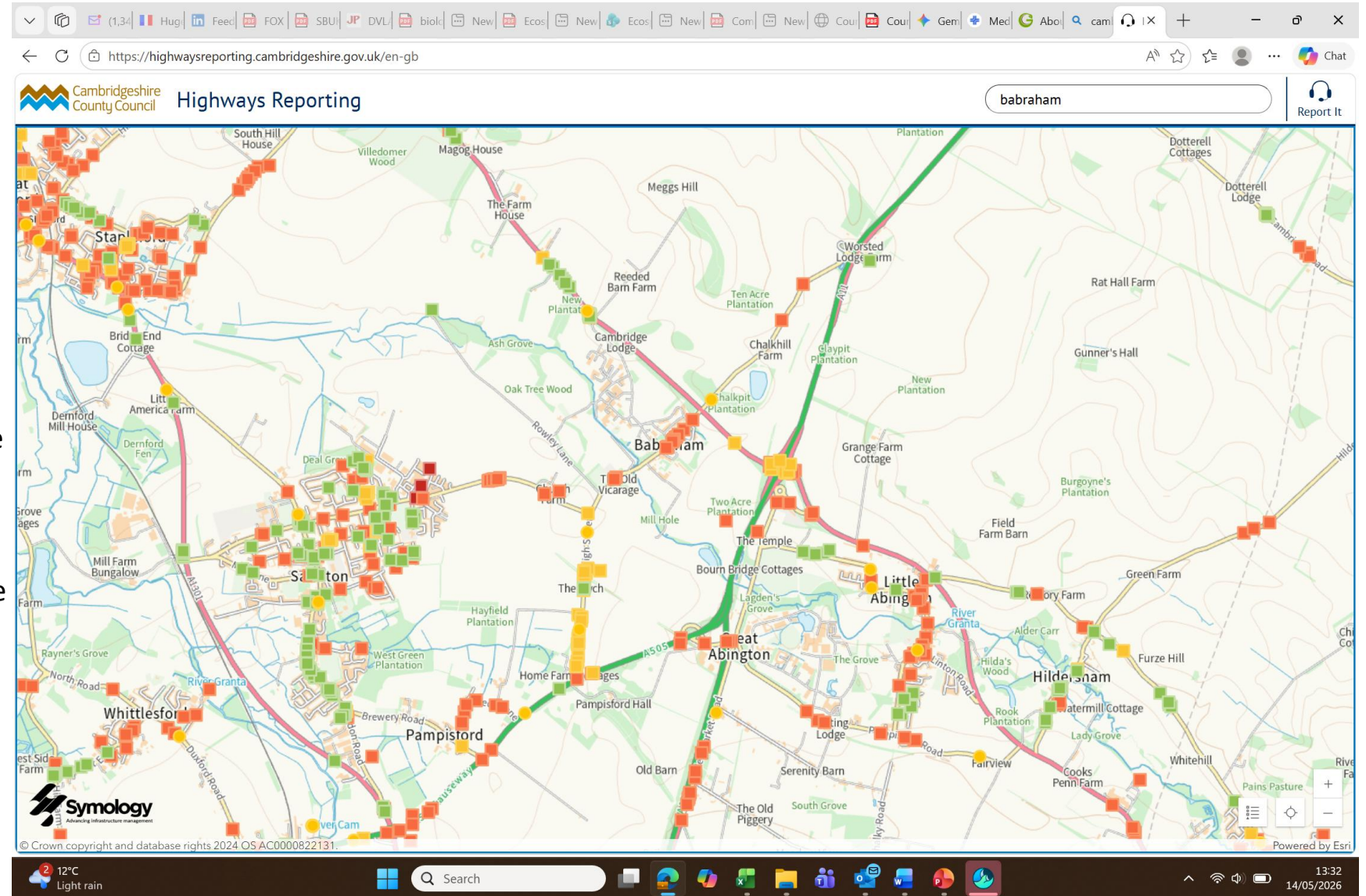
Represent 11 Parishes: Duxford, Whittlesford, Foxton, Fowlmere, Hinxton, Ickleton, Pampisford, Shepreth, Thriplow & Heathfield, Chishills, Heydon, Ickleton.

Budget 2026/27 & 3 yr Plan

- The nearly £1.3 billion Business and Budget Plan includes a number of investments aligned with the council's three new ambitions:
- Supporting a green and sustainable county
- To improve day to day journeys for drivers, cyclists and bus users, it has allocated an additional £20m for highway maintenance, on top of Government funding, to provide safer and more reliable roads across Cambridgeshire. The council will also continue to provide leadership and deliver its Climate Change and Environment Strategy.
- Enabling full and healthy lives for all
- To support older people, adults with disabilities and families, who rely on care every day, the council is allocating £14.7m of additional funding for adult social care providers. This will help them to manage rising costs and ensure care workers are paid the Real Living Wage, improving stability and quality for those who depend on care workers for their support.
- Ensuring fairness and opportunity
- To help families under pressure from the cost-of-living crisis, the council is prioritising £1m to continue holiday meal vouchers for the children most in need, through to the end of summer 2026. As the Government withdraws the Household Support Fund, the council will also use its new £5m Crisis and Resilience Fund to provide a wider range of anti-poverty measures, offering practical support to households facing financial challenges.
- The plan will create 3,500 new primary school places and invest £72 million over five years to increase secondary school places, including at Alconbury Weald and North-West Cambridge. It also includes £780,000 a year to run a children's residential home in South Cambridgeshire, as well as continued funding for the Families First programme, an early-intervention project that helps keep more families together and is supported by the £6.7 million Children's, Families and Youth Grant. In addition, more than £1.2 million will be invested in libraries and archives over the next two years.
- The plans discussed included an increase of council tax by 4.99%, the maximum permitted by Government for county councils, as is the case in nearly all councils across England, and the level assumed by Government in setting its grant allocations. A total 2% of this increase is specifically for adult social care funding. The increase will generate around £21million in additional funding and help the council continue providing the essential services people rely on. This will mean that for a Band D property, the County Council's share of Council Tax would increase by £84.78 a year, or £1.63 a week.

Potholes !

- Over the past five years, we have repaired an average of 55,400 individual potholes each year.
- In general terms, if a pothole is large and deep, we will fix it within five days. If it is smaller and less of a hazard, we will fix it within 21 days
- We mark up the potholes in different ways, those repaired in five days are not marked as our repair is immediate, yellow means we will repair it within 21 days. We always aim to fix potholes within five and 21 days depending on their level of priority
- We aim to fix emergency faults as soon as possible, always within five days
- We always aim to repair potholes with a permanent fix first time. A pothole repair costs around £50
- The dragon patcher is a specialist machine, nicknamed the 'dragon' because it fires out flames to dry out the road surface.



My Priorities

- 1. Chair & Committee
 - Council Chair
 - Environment & Green Investment
- 2. Highways Matters
 - Potholes !
 - Civil Parking Enforcement began Feb 1st 2024
 - New gulley scanning & cleaning programme initiated
- 3. Infrastructure
 - A505 plan for next 10 years
- 4. Represent you on County Farms
 - Currently 33,000 acres
 - Environmental Land Management
 - Tree planting
 - New farm acquisition.