

# THE BABRAHAM NEWSLETTER

# Muckspreader

SUMMER 2026

## Park & Ride

The Department for Transport has stated the GCP have requested a delay due to the scheme's proximity to a gas pipeline which has been highlighted by National Gas Transmission PLC. (NGT). The period of abeyance will be until the 30th June 2026 to allow time for a redesign.

The letter stresses that the inquiry is not cancelled, and new timings will be proposed in due course possibly sooner than 30th June.

Significantly, the Mayor of the Combined Authority who has responsibility for strategic transport policy has also made a formal objection to the GCP scheme and we note his resolute opposition to it.

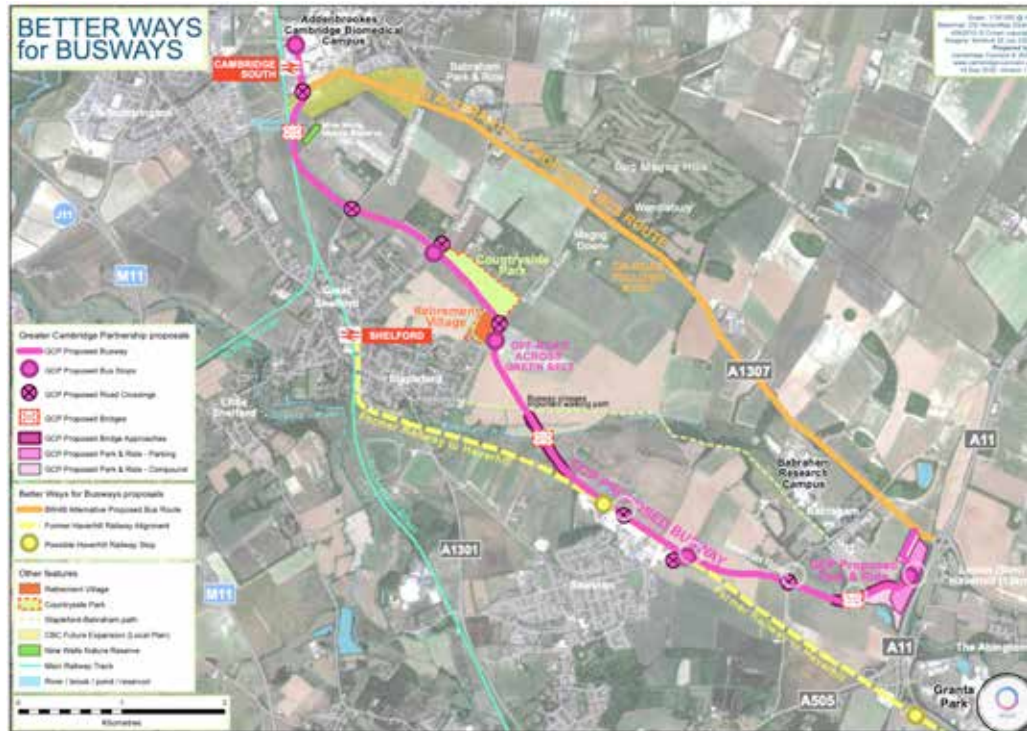
Better Busways is well organised for the inquiry with excellent consultants lined up, with our Highways Engineer evidencing the material failures with the proposed GCP scheme with regard to transport and connectivity.

However we still have a funding gap which has to be bridged if we are to secure the best representation at the public inquiry and we are appealing for public donations. We are very grateful to those people who have already made donations and for the generous financial support of Stapleford and Great Shelford Parish councils, Magog Trust, Hobson's Conduit Trust and Cambridge Past, Present & Future.

## Bus Shelter-revamped and looks great



Thanks go to Gary and Charlotte, GA Groundworks



**It was voted by the parish to continue with the Neighbourhood Plan as we are so close. It is a document that Babraham may well need in the future!**

### Current status of our Neighbourhood Plan

A Pre-submission Draft NP was produced by the Babraham NP Working Group and was reviewed by the Local Planning Authority (LPA) NP Team in April 2024. LPA feedback informed us that significant delays to the emerging Greater Cambridge Local Plan would prevent the submission of a NP that included any policies on housing development inside the Green Belt (i.e. The Close).

Since then, however, the BRC have decided to move ahead with an application for outline planning permission for housing development in The Close. An approved NP will mean that all proposed developments or changes, including the future detailed planning application for the Close, will need to take account of to the Design Guidelines that have been developed

through the NP process. If the NP is developed and approved to align with the BRC planning process, we will be able to demonstrate that Babraham Parish has met its housing allocation and has no need for any further development.

**The village hall is about to get started, After so many attempts are we finally going to get something, I think we are.**



## The High Street

You may well notice the High Street verge is brown, it is because we are in the process, with the help of the Institute Estate team, of re-seeding. For the last few years it is basically full of weeds. It has been sprayed to kill those, we will then collect up all the dead stuff and then it can be re-seeded. It will be worth it in the end and our High Street will look great. To add to that in September we will plant daffodils along the wall.

Chris Morris was contracted by the Parish to maintain the village and he is doing a grand job keeping



Around the village we do get a little bit of help from our friends!

everything looking neat and tidy. I have heard a number of people who have visited our village and have been very complimentary about the whole feel and look, we do live in a special place and it is worth looking after.

We have had our issues over the last few months as has the rest of the country with potholes, which continue to be a problem, we did get some filled! The Parish will continue to work with our County Councillor Cllr Laurence Damary-Homan (he's a good man) on approving our roads and highways, maybe to even address the massive artic lorry situation that barge through the village on a regular basis. Watch this space! We might even get our sign removed which the wind blew down a few months back. RA



## In memory and gratitude

This tree stands as a living tribute to the strength and compassion shown by our community during the COVID-19 pandemic.

We honour the volunteers who gave their time and care to support those in need, and we remember all who were impacted, and those who lost their lives.

May this tree grow as a symbol of resilience, kindness, and hope for generations to come.

Planted in reflection and remembrance for the COVID-19 Day of Reflection, 8 March 2026.

This tree has been provided by

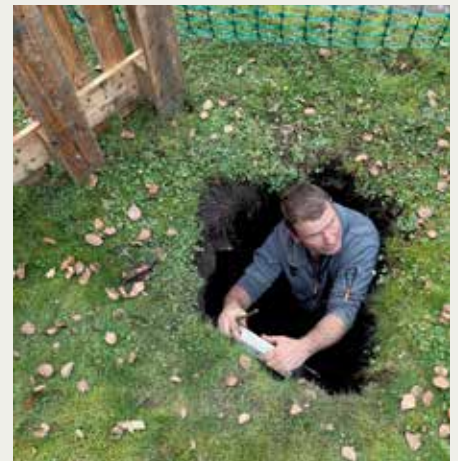


## Forest Garden

The garden continues to flourish and the grass will be cut with paths in it during the summer. Look out for the serpentine path, it will be great fun to walk through during the summer months when the grass is at its highest. On the way round look out for the Covid Tree, no it is not contagious, it was given to the Parish of Babraham to honour volunteers who gave their time and care during those strange days way back now in 2020!

## Sinking feeling!

Whatever it was, it gave Ed who lives in the Alms House a fright, it is not everyday the Earth just gives away. Thankfully Ed was OK and just suffered with minor shock of what had just happened! Gary shown here in the photo was standing on the top rung of a ladder, and he's a big man! Gary and his team filled the hole and all was good again. You never know what lies beneath!



## Photo of the issue



First foundations for the Close!

## Parish Councillors

### Stuart Laurie (Chair)

stuart.laurie@babraham-pc.gov.uk

### Denise Dear (Vice Chair)

denise.dear@babraham-pc.gov.uk

### Robert Attwood

robert.attwood@babraham-pc.gov.uk

### Tim Jones

tim.jones@babraham-pc.gov.uk

### Kelly Hathaway

kelly.hathaway@babraham-pc.gov.uk

### Anne Charteris (Clerk)

clerk@babraham-pc.gov.uk

### Cambridgeshire County Council

Peter Fane

### South Cambridgeshire District Council

Peter McDonald

### Member of Parliament

Pippa Heylings (MP), Liberal Democrat



# Church

## St Peter's Church Renewal – the Batman has arrived!

MATTHEW PUNSHON

We have been working with our residents in the Church - Pipistrelle and Brown Long-eared Bats! A specialist ecologist has visited the Church and undertaken DNA testing of bat droppings (yes – that is a thing!). Our challenge is how to replace part of the roof with minimum disruption to any bats living there.

The good news is that initial indications show that our bats are not within the roof replacement area, but the next job is to undertake a night-time bat survey in the church and around the graveyard.

We have also been talking to archaeologists. We need to replace one soakaway and dig a new one to cope with the much higher deluges of rain (when we have rain!) that we encounter as the climate changes. Gravestones only started to be used for general burials in the 17th and 18th centuries, so the archaeologist will be present to oversee any dig around the visible gravestones.

We now have specifications for the new roof and guttering plus the soakaways and now have a full cost breakdown from three contractors. The next step in May is to make the planning application to the Diocese of Ely and to meet with the National Lottery Heritage Fund prior to making an application; competition is huge and without that funding we will not be able to proceed – to misquote: 'it could be us'!



The National Lottery want to see how these works impact the community - they provide financial support (around



**Whilst all the work is being done to put together the necessary applications to fund the work on the roof and drainage, all the regular events and services continue at the church. Our regular services take place at 11am on the 1st and 3rd Sundays of the month. There will also be a Choral Evensong on Sunday 28th June to celebrate our patronal festival. Further details of all these services including timings can be found on our Facebook page.**

£20,000!) for community events and projects. We hope to be working with the School to fund art, history and science/ ecology projects and hope to develop some wider community ecology projects with the village garden as well as using the Church for art exhibitions and concerts. We are looking for a community project co-ordinator to manage this fund – if you are interested contact vicar@stmaryssawston.org.uk . You don't have to be a churchgoer – this is all about having wider community impact for all faiths and none.

In the meantime, a huge thanks to our volunteers in the village and in particular Marcus Segust our village electrician who has used his specialist skills to undertake a 5 year electrical test (and undertake the works required) as well as Gary and Charlotte Alway (GA Groundworks) who have been advising on the groundworks.

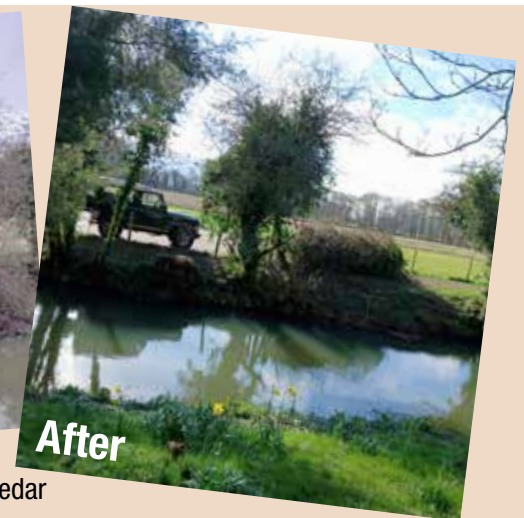
## Also around the Church

A lot of work has been achieved down at the churchyard to improve the look and help with the wildlife. The area immediately to the left as you cross the bridge over the river is a lovely spot to sit and ponder the world and eat your picnic. The bank has been cleared along with the hedge opposite which now opens up the view across the meadows. See photos.

Other areas of the churchyard will be left for the wildlife to enjoy, but paths will be cut and the front will be maintained. Harry the Heron is usually about so keep an eye open for him, actually him and his partner



Before



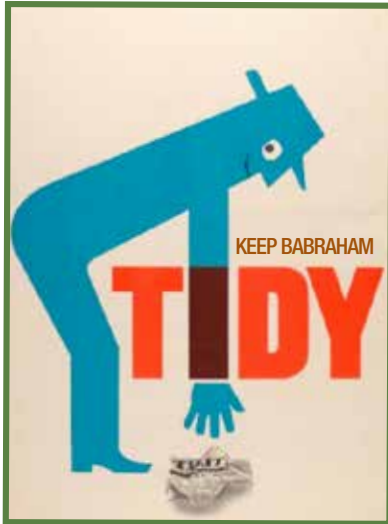
After

Harriet, have a nest high up in the Cedar tree close by. Things to look out for in the churchyard are: A bird-box, Owl box, Snake cover, Bug hotel, Woodland path, Beginnings of a stumpery! RA



## Litter picks. . . .

. . . are done regularly and always we collect at least three bin bags full! Which is really disappointing for us in the village. People it seems can't seem to take it home with them, it has to be jettisoned out of the car window! Poor form. . . what did their parents teach them when they were young! If anyone happens to catch this with a camera shot, send it to me and I will shame them in the next Muckspreader!



Within the last year we have had the normal cans, food wrappers, beer bottles etc and also just dumped on the High Street near the school, a beer barrel (empty!) a double mattress and a Fridge Freezer!

Lucy Clayton-Payne, is a founder member of the local group, 'Rubbish Friends'.

They meet at various litter hotspots and gather everything from the verges. The council are alerted and they send a team to collect the bags. Over the last 12 years, they have collected approximately 14,000 x100 L bags of rubbish! The worst offenders are fast food eaters and drinkers. A fantastic achievement by that team and if you want to help **Keep Britain Tidy** contact [attwoodrobert@gmail.com](mailto:attwoodrobert@gmail.com) and I will put you in touch with Lucy.



## SAWSTON

High Street Dental Practice  
01223 835845

Falkner House Dentistry  
01223 839520

Pampisford Dental Practice  
01223 566595

# THE George

RESTAURANT BAR

SUPPORT YOUR LOCAL

All functions  
are considered!

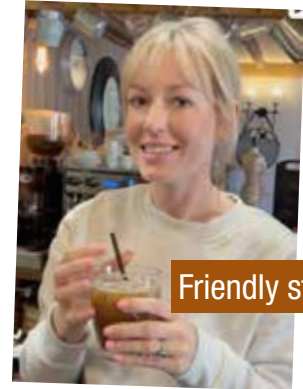
01223 837755

[www.thegeorgeinnbabraham.co.uk](http://www.thegeorgeinnbabraham.co.uk)

Entertainment



“Lovely and friendly pub. A beautiful beer garden that reminds you of English summers of old. You may even get a Spitfire buzzing over. Great menu and a well pulled pint. CM



Friendly staff



Beer Garden & Patio

Great food and surroundings



Home Cooked Food



## ACORN GARAGE

Service and repairs  
Cheapest fuel around  
Good shop  
**01223 893100**

## Sawston Medical Practice

0300 234 5555

If you want to contribute to this newsletter Advertising is free, photographs, articles are all welcome. Email to [attwoodrobert@gmail.com](mailto:attwoodrobert@gmail.com)